

7 June 2016

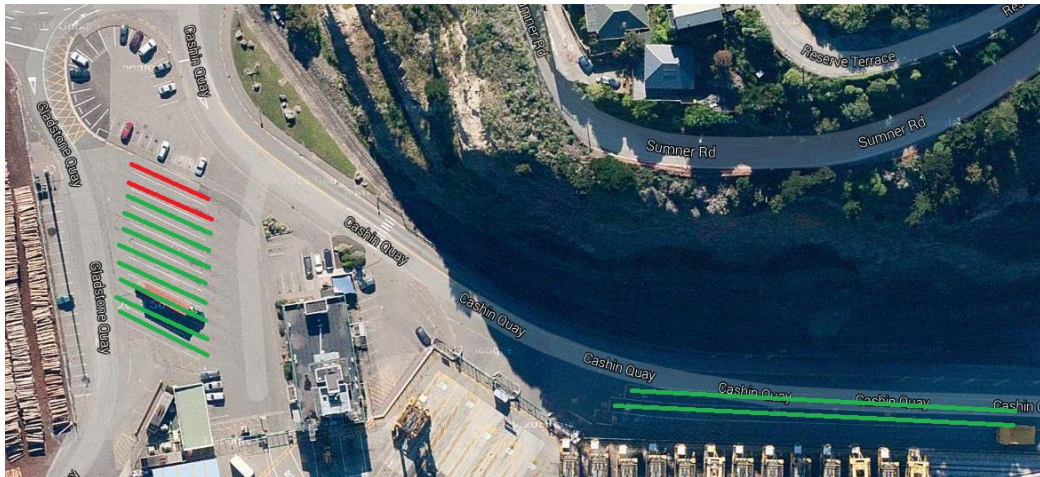
## TRUCKING NOTICE

### TWO TRUCK PARK-UP LANES UNAVAILABLE FOR TWO DAYS DURING ELECTRICAL UPGRADE PROJECT

On Wednesday and Thursday this week (8 and 9 June) the work to upgrade the power supply to Lyttelton Port will require the closure of two truck park-up lanes at the Lyttelton Container Terminal.

During this time eight lanes in the truck park-up area will still be available - as well as the truck queue lane along Cashin Quay Road. The diagram below shows the location of the truck lanes that will be temporarily closed (in red) and the lanes that are available for trucks (in green).

It is not expected that the temporary closure of these two lanes will have a significant effect on our operations.



### ELECTRICAL UPGRADE PROJECT OVERVIEW

LPC is undertaking a project to improve the power supply to Lyttelton Port whilst providing capacity for future growth and flexibility for Port expansion. The upgrade will make power supply to Lyttelton Port more resilient in the event of another earthquake and enhance the reliability of the power supply to support our 24/7 operation.

The project involves trenching areas of Lyttelton Port to lay new cables. As this Port-wide project progresses, staff and Port users will be advised as construction moves on to new areas affecting operations.

LPC is working with contractors to ensure minimal disruption for all Port Users during the project. We appreciate everyone's patience and co-operation during the construction work.

### CONTACT

For any operational queries, please contact Janice Wickes, Customer Services Manager, Lyttelton Container Terminal on 03 328 8831 or [Janice.Wickes@lpc.co.nz](mailto:Janice.Wickes@lpc.co.nz).

Regards

Simon Munt  
**MARKETING MANAGER**