

November 2020

## Customer and Port User Update

### Sutton Quay / Number 7 Gate Closure

#### What is happening?

LPC will soon begin work to provide pedestrian access from Te Ana Marina to Norwich Quay. This is part of LPC's commitment to open the west side of the waterfront around Te Ana Marina as an area for the public to access and enjoy.

This work includes upgrading the Number 7 Gate on Sutton Quay and moving it to a new position to create space for a new pedestrian crossing (see site map attached). The new gate will include new software to make access easier for our security team to manage.

As a result of this work, no vehicles or pedestrians will be able to access the inner harbour through the Number 7 Gate on Sutton Quay.

#### When is this happening?

Work will begin on Monday November 16 and be completed by approximately Monday December 14.

#### How this could impact you:

During this time, no vehicles or pedestrians will be able to access the inner harbour through the Number 7 Gate on Sutton Quay.

Instead, vehicles will need to access the inner harbour via the Number 2 Gate at the end of the Oxford Street Overbridge (see site map attached).

#### Car parking:

Car parking in this area will also be limited. If you have any concerns in regard to car parking during this time please contact us.

#### Stay safe:

Please stay safe and alert to your surroundings at all times and follow any traffic management in place.

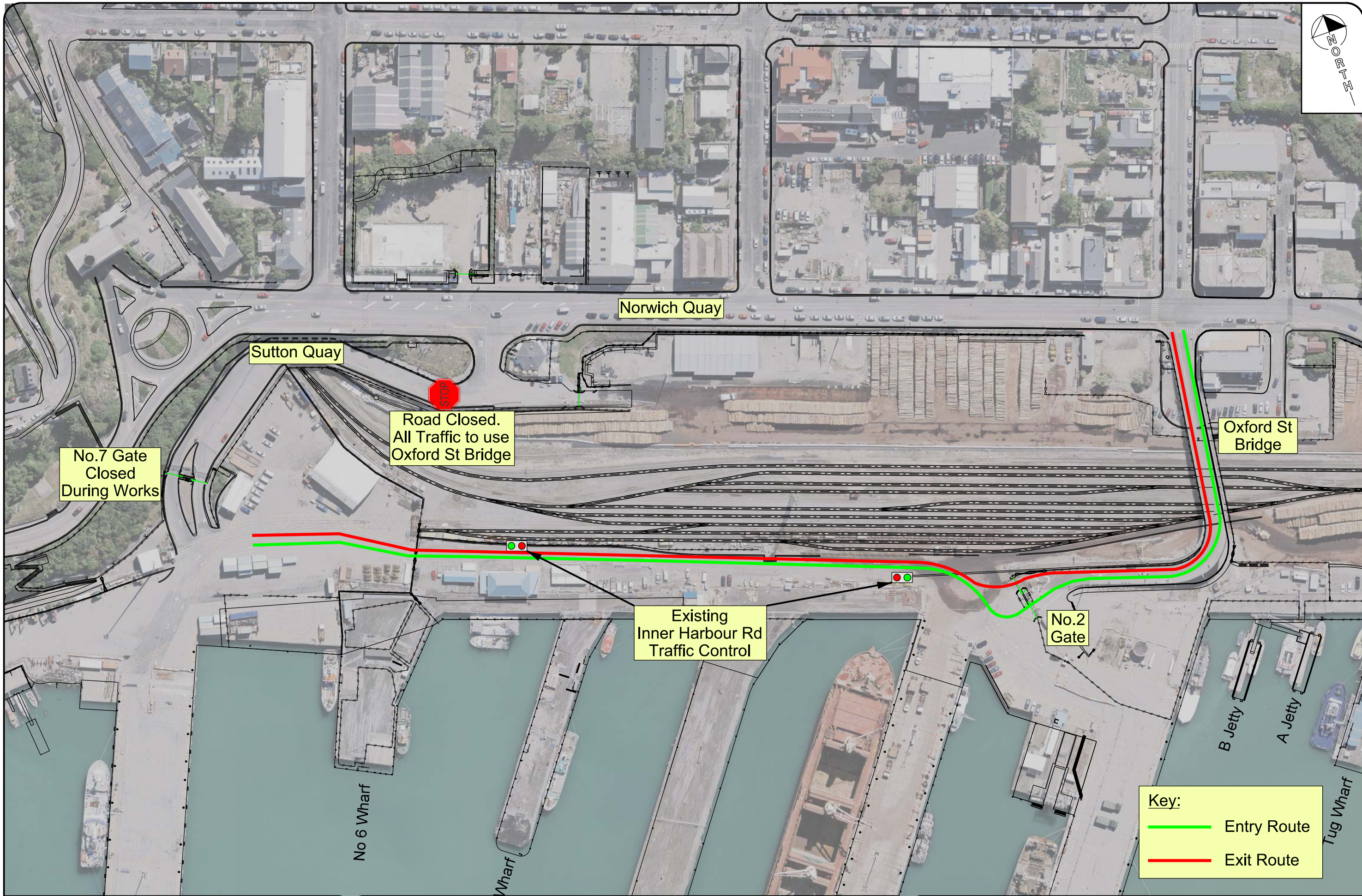
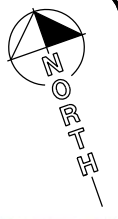
#### Here to help:

Thank you for your support and patience during this time, and we apologise for any inconvenience this may cause for you.

If you have any questions, do not hesitate to reach out to your usual LPC contact.

#### LPC Communications





**Key:**

— Entry Route

— Exit Route



Private Bag 501  
Norwich Quay  
Lyttelton  
New Zealand  
Ph. +64 3 328 8198  
Fax +64 3 328 7964

This drawing and its content is the property of the Lyttelton Port Company Ltd  
It shall not be used or reproduced in any form without the expressed approval of the Company

### Traffic Management Plan During No.7 Gate Relocation

Scales  
**1:1500**  
Original Sheet Size A3

Designed		
Drawn	JR	29.10.20
Checked		
Approved		

Sheet 1 of
Drawing No
<b>C-A3-14529</b>
File